



**PROPORCION DE INDICADORES NUTRICIONALES POR PROVINCIAS Y DISTRITOS EN GESTANTES
QUE ACUDEN A LOS ESTABLECIMIENTO DE SALUD - DIRESA JUNIN 2013**

Tabla Antropométrica OMS

Provincia Distrito	Quintil	Nro de		SobrePeso		Normal		Deficit		ANEMIA		
		Registros	Evaluaadas	N°	%	N°	%	N°	%	Evaluaadas	N°	%
CHANCHAMAYO		5143	5056	1759	34.8	2658	52.6	635	12.6	1071	150	14.0
CHANCHAMAYO	2	617	595	234	39.3	289	46.4	71	11.9	49	8	16.3
PERENE	1	1922	1876	611	32.6	1004	53.5	260	13.9	331	72	21.8
PICHANAQUI	1	1702	1700	550	32.4	927	54.5	222	13.1	329	43	13.1
SAN LUIS DE SHUARO	2	230	213	100	46.9	96	45.1	17	8.0	71	4	5.6
SAN RAMON	2	612	612	243	39.7	308	50.3	61	10.0	247	22	8.9
VITOC	2	60	60	21	35.0	34	56.7	4	6.7	44	1	2.3
CHUPACA		1263	1142	310	35.0	693	56.7	138	12.1	729	319	43.8
AHUAC	3	125	115	31	27.0	70	60.9	14	12.2	32	18	56.3
CHONGOS BAJO	3	103	86	19	22.1	60	69.8	7	8.1	74	49	66.2
CHUPACA	3	641	584	181	31.0	336	57.5	66	11.3	392	169	43.1
HUACHAC	3	52	49	10	20.4	32	65.3	7	14.3	16	6	37.5
HUAMANCACA CHICO	2	119	110	40	36.4	57	51.8	13	11.8	89	18	20.2
SAN JUAN DE ISCOS	3	49	45	7	15.6	24	53.3	14	31.1	34	13	38.2
SAN JUAN DE JARPA	2	56	50	10	20.0	38	76.0	2	4.0	15	7	46.7
TRES DE DICIEMBRE	2	60	52	7	13.5	37	71.2	8	15.4	48	12	25.0
YANACANCHA		58	51	5	9.8	39	76.5	7	13.7	29	27	93.1
CONCEPCION		1573	1452	387	26.7	869	59.8	196	13.5	521	227	43.6
ACO	2	37	35	6	17.1	28	80.0	1	2.9	15	5	33.3
ANDAMARCA	1	187	168	31	18.5	111	66.1	26	15.5	33	17	51.5
CHAMBARA	2	65	60	11	18.3	39	65.0	10	16.7	34	26	76.5
COCHAS	2	52	43	11	25.6	30	69.8	2	4.7	12	4	33.3
COMAS	1	232	219	63	28.8	115	52.5	41	18.7	14	3	21.4
CONCEPCION	3	327	290	90	31.0	165	56.9	35	12.1	107	44	41.1
HEROINAS TOLEDO	2	27	23	2	8.7	14	60.9	7	30.4	13	6	46.2
MANZANARES	3	30	27	5	18.5	20	74.1	2	7.4	6	3	50.0
MARISCAL CASTILLA	2	58	52	17	32.7	33	63.5	2	3.8	18	2	11.1
MATAHUASI	3	125	122	41	33.6	75	61.5	6	4.9	38	14	36.8
MITO	3	21	21	4	19.0	13	61.9	4	19.0	17	4	23.5
NÚEVE DE JULIO	2	50	46	13	28.3	28	60.9	5	10.9	17	6	35.3
ORCOTUNA	2	135	130	44	33.8	71	54.6	15	11.5	48	5	10.4
SAN JOSE DE QUERO	2	161	153	21	13.7	100	65.4	32	20.9	105	69	65.7
SANTA ROSA DE OCOPA	3	66	63	28	44.4	27	42.9	8	12.7	44	19	43.2
HUANCAJO		11825	10687	2990	44.4	6110	42.9	1576	14.7	3376	1655	46.1
CARHUACALLANGA	3	3	3	0	0.0	3	100.0	0	0.0			
CHACAPAMPA	3	18	17	2	11.8	14	82.4	1	5.9	8	6	75.0
CHICCHE	3	38	33	11	33.3	21	63.6	1	3.0	17	14	82.4
CHILCA	3	2308	2072	604	29.2	1200	57.9	268	12.9	641	309	48.2
CHONGOS ALTO	3	38	34	6	17.6	18	52.9	10	29.4	27	21	77.8
CHUPURO	2	75	65	22	33.8	32	49.2	11	16.9	12	4	33.3
COLCA	2	26	24	1	4.2	19	79.2	4	16.7	16	13	81.3
CULLHUAS	2	44	42	5	11.9	30	71.4	7	16.7	20	12	60.0
EL TAMBO	3	2968	2729	701	25.7	1561	57.2	464	17.0	868	305	35.1
HUACRAPUQUIO	3	33	29	4	13.8	23	79.3	2	6.9	1	0	0.0
HUALHUAS	3	43	39	14	35.9	18	46.2	7	17.9	11	5	45.5
HUANCAN	3	512	445	112	25.2	261	58.7	72	16.2	137	45	32.8
HUANCAJO	4	2952	2647	900	34.0	1427	53.9	316	11.9	723	364	50.3
HUASICANCHA	2	35	30	1	3.3	25	83.3	4	13.3	24	21	87.5
HUAYUCACHI	2	254	233	61	26.2	143	61.4	28	12.0	126	97	77.0
INGENIO	2	67	58	18	31.0	36	62.1	4	6.9	21	13	61.9
PARIAHUANCA	1	336	303	91	30.0	174	57.4	38	12.5	21	10	47.6
PILCOMAYO	3	280	257	64	24.9	145	56.4	48	18.7	8	0	0.0
PUCARA	2	151	146	41	28.1	84	57.5	21	14.4	87	39	44.8
QUICHUAY	2	44	39	8	20.5	24	61.5	7	17.9	29	14	48.3
QUILCAS	2	45	42	9	21.4	25	59.5	8	19.0	14	6	42.9
SAN AGUSTIN	3	172	160	33	20.6	98	61.3	29	18.1	74	12	16.2
SAN JERONIMO DE TUN	3	192	170	42	24.7	100	58.8	28	16.5	33	8	24.2
SANO	2	65	62	16	25.8	34	54.8	12	19.4	39	13	33.3
SANTO DOMINGO DE AC	1	248	224	33	14.7	144	64.3	47	21.0	71	25	35.2
SAPALLANGA	3	569	498	119	23.9	286	57.4	90	18.1	230	113	49.1
SICAYA	2	208	202	57	28.2	114	56.4	31	15.3	110	81	73.6
VIQUES	2	101	84	15	17.9	51	60.7	18	21.4	8	5	62.5
JAUJA		1952	1818	600	17.9	972	60.7	242	13.3	647	247	38.2
ACOLLA	2	144	139	43	30.9	78	56.1	18	12.9	70	24	34.3
APATA	2	122	108	29	26.9	58	53.7	21	19.4	44	22	50.0
ATAURA	3	38	37	7	18.9	20	54.1	9	24.3	11	2	18.2
CANCHAYLLO	3	33	32	7	21.9	20	62.5	5	15.6	26	7	26.9
CURICACA	2	43	35	11	31.4	19	54.3	5	14.3	18	6	33.3
EL MANTARO	3	40	35	8	22.9	19	54.3	8	22.9	7	0	0.0
HUAMALI	3	46	42	12	28.6	26	61.9	4	9.5	24	14	58.3
HUARIPAMPA	3	23	22	5	22.7	15	68.2	2	9.1	10	6	60.0
HUERTAS	3	65	57	19	33.3	32	56.1	6	10.5	5	2	40.0
JANJAILLO	2	16	16	8	50.0	8	50.0	0	0.0	10	4	40.0
JAUJA	3	290	265	96	36.2	139	52.5	29	10.9	72	34	47.2
JULCAN	3	18	16	2	12.5	12	75.0	2	12.5	11	3	27.3
LEONOR ORDÓÑEZ	3	32	26	12	46.2	11	42.3	3	11.5	6	1	16.7
LLOCLLAPAMPA	3	31	28	9	32.1	16	57.1	3	10.7	20	6	30.0
MARCO	3	38	35	15	42.9	15	42.9	5	14.3	23	8	34.8
MASMA	2	70	68	22	32.4	37	54.4	9	13.2	35	6	17.1
MASMA CHICCHE	2	15	15	0	0.0	12	80.0	3	20.0	3	2	66.7
MOLINOS	2	55	54	18	33.3	31	57.4	5	9.3	17	2	11.8
MONOBAMBA	2	39	39	14	35.9	19	48.7	6	15.4	18	3	16.7
MUQUI	3	24	23	6	26.1	16	69.6	1	4.3	14	9	64.3
MUQUIYAUYO	3	56	53	18	34.0	31	58.5	4	7.5	5	2	40.0
PACA	2	25	24	10	41.7	14	58.3	0	0.0	7	2	28.6
PACHA	3	25	22	8	36.4	10	45.5	4	18.2	9	6	66.7
PANCAN	3	34	33	16	48.5	16	48.5	1	3.0	8	5	62.5
PARCO	2	36	34	7	20.6	20	58.8	7	20.6	24	6	25.0
POMACANCHA	2	40	36	10	27.8	14	38.9	12	33.3	14	10	71.4
RICRAN	2	21	19	2	10.5	13	68.4	4	21.1	1	1	100.0
SAN LORENZO	2	54	50	21	42.0	21	42.0	8	16.0	33	14	42.4
SAN PEDRO DE CHUNAN	3	12	12	4	33.3	6	50.0	2	16.7	2	0	0.0
SAUSA	2	59	57	22	38.6	28	49.1	7	12.3	5	4	80.0
SINCOS	2	100	97	22	22.7	59	60.8	16	16.5	21	14	66.7
TUNAN MARCA	2	32	27	11	40.7	15	55.6	1	3.7	5	1	20.0
YAULI	2	32	31	9	29.0	18	58.1	4	12.9	13	11	84.6
YAUYES	3	241	231	97	42.0	104	45.0	28	12.1	56	10	17.9

JUNIN		661	605	190	31.4	349	57.7	66	10.9	360	168	46.7
CARHUAMAYO	3	179	167	64	38.3	96	57.5	7	4.2	44	36	81.8
JUNIN	3	302	270	81	30.0	149	55.2	40	14.8	208	79	38.0
ONDORES	2	26	25	3	12.0	16	64.0	6	24.0	18	14	77.8
ULCUMAYO	2	154	143	42	29.4	88	61.5	13	9.1	90	39	43.3
SATIPO		8201	7551	1794	23.8	4231	56.0	1526	20.2	3837	930	24.2
COVIRIALI	1	160	147	38	25.9	83	56.5	26	17.7	59	14	23.7
LLAYLLA	1	179	157	46	29.3	85	54.1	26	16.6	108	10	9.3
MAZAMARI	1	1055	952	241	25.3	563	59.1	148	15.5	588	63	10.7
PAMPA HERMOSA	1	195	179	63	35.2	98	54.7	18	10.1	140	27	19.3
PANGO	1	2587	2326	513	22.1	1242	53.4	571	24.5	1232	309	25.1
RIO NEGRO	1	812	733	183	25.0	410	55.9	140	19.1	169	22	13.0
RIO TAMBO	1	1656	1656	239	14.4	1050	63.4	367	22.2	815	348	42.7
SATIPO	2	1557	1401	471	33.6	700	50.0	230	16.4	726	137	18.9
TARMA		2668	2484	855	34.4	1343	54.1	286	11.5	1172	422	36.0
ACOBAMBA	2	246	229	89	38.9	115	50.2	25	10.9	123	11	8.9
HUARICOLCA	2	54	46	10	21.7	27	58.7	9	19.6	18	6	33.3
HUASAHUASI	2	310	289	83	28.7	177	61.2	29	10.0	80	53	66.3
LA UNION	3	105	97	33	34.0	58	59.8	6	6.2	44	18	40.9
PALCA	2	201	185	56	30.3	112	60.5	17	9.2	76	6	7.9
PALCAMAYO	2	95	90	21	23.3	54	60.0	15	16.7	52	21	40.4
SAN PEDRO DE CAJAS	3	83	75	21	28.0	46	61.3	8	10.7	28	19	67.9
TAPO	2	141	139	33	23.7	88	63.3	18	12.9	80	29	36.3
TARMA	3	1435	1334	509	38.2	666	49.9	139	11.9	671	259	38.6
YAULI		1071	971	284	29.2	541	55.7	146	15.0	470	279	59.4
CHACAPALPA	2	10	10	4	40.0	6	60.0	0	0.0	5	3	60.0
HUAY HUAY	3	34	32	8	25.0	19	59.4	5	15.6	11	9	81.8
LA OROYA	5	523	476	140	29.4	265	55.7	71	14.9	190	94	49.5
MARCAPOMACOCCHA	2	12	11	3	27.3	8	72.7	0	0.0	4	4	100.0
MOROCOCHA	4	114	101	30	29.7	54	53.5	17	16.8	47	36	76.6
PACCHA	3	31	28	10	35.7	13	46.4	5	17.9	25	12	48.0
SANTA BARBARA DE C.	3	18	16	8	50.0	7	43.8	1	6.3	12	8	66.7
SANTA ROSA DE SACCO	4	211	189	52	27.5	112	59.3	25	13.2	111	84	75.7
SUITUCANCHA	2	24	23	7	30.4	12	52.2	4	17.4	21	9	42.9
YAULI	5	94	85	22	25.9	45	52.9	18	21.2	44	20	45.5
DIRESA		34357	31766	9169	28.9	17766	55.9	4811	15.1	12183	4297	35.3

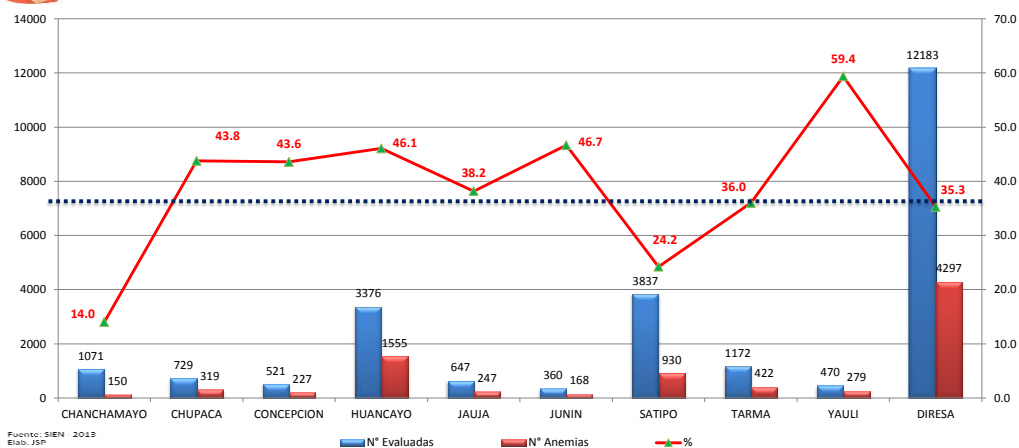
FUENTE : SISTEMA INFORMATICO DEL ESTADO NUTRICIONAL SIEN 2013

Elab: JSP /13

PROVINCIA	N° Evaluadas	N° Anemias	%
CHANCHAMAYO	1071	150	14.0
CHUPACA	729	319	43.8
CONCEPCION	521	227	43.6
HUANCAYO	3376	1555	46.1
JAUJA	647	247	38.2
JUNIN	360	168	46.7
SATIPO	3837	930	24.2
TARMA	1172	422	36.0
YAULI	470	279	59.4
DIRESA	12183	4297	35.3



PROPORCION DE ANEMIA EN GESTANTES QUE ACUDEN A LOS ESTABLECIMIENTO DE SALUD - DIRESA JUNIN 2013



PROVINCIA	N° Evaluadas	N° Deficit	%
CHANCHAMAYO	5056	635	12.6
CHUPACA	1142	138	12.1
CONCEPCION	1452	196	13.5
HUANCAYO	10687	1576	14.7
JAUJA	1818	242	13.3
JUNIN	605	66	10.9
SATIPO	7551	1526	20.2
TARMA	2484	286	11.5
YAULI	971	146	15.0
DIRESA	31766	4811	15.1



PROPORCION DE DEFICIT DE PESO EN GESTANTES QUE ACUDEN A LOS ESTABLECIMIENTO DE SALUD DIRESA JUNIN 2013

